



- + Aluminium profile suspension system for light/medium loads up to 30 kg
- + Product family GTS / GTN / GTL
- + Can be combined with all Commander systems
- + Standardly adjustable solution for individual loads

Included in delivery

System individual components incl. cable duct cover and assembly material.

Technical data

Material	Connecting tube: DIN EN 573 EN AW-ALMgSi Components: DIN EN 1706 EN AC-AISI 12 (Fe)
Painting	Powder coating
Colour	Tube, components: RAL 7035, light grey
Ingress protection	IP54 to EN 60529



GTS

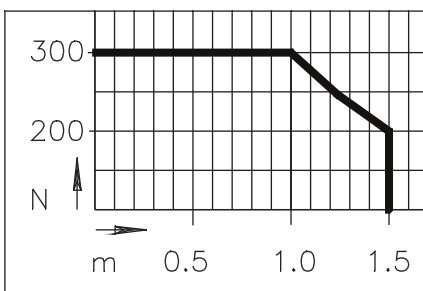
Product range

Type	Order No.	Weight (g)
Top-mounted joint	49.44 66 00	1600
Foot stand	49.44 72 00	300
Wall hinge W	49.44 70 00	2400
Wall hinge S	49.44 70 30	2400
Angle	49.44 71 00	800
Angle GTS / GT 48/2	49.44 71 49	1800
Coupling	49.44 73 00	600
Coupling 15°, combination of coupling and console flange 15°	49.44 73 76	800
Flange coupling	49.44 77 00	900
Angle coupling	49.44 75 00	1000
Angle coupling, combination of angle coupling and console flange 15°	49.44 75 73	1200
Foot stand drehbar	49.44 72 21	900
Inclining adapter	49.44 80 00	900
Coupling Siemens PRO	49.44 73 02	800
Angle coupling Siemens PRO	49.44 75 02	1500
Adapter plate Siemens Pro	49.44 00 01	200
Coupling DN, combination of coupling and inclining adapter	49.44 62 00	1500

Aluminium profile, max. outreach 1.5 m	Order No.	Weight (g)
GTS Profile, painted RAL 7035, 0.5 m	49.44 10 01	1550
GTS Profile, painted RAL 7035, 1 m	49.44 10 02	3100
GTS Profile, painted RAL 7035, 2 m*	49.44 10 03	6200
Variable length (please specify)	49.44 10 99	
Aluminium profile, max. outreach 1.5 m		
GTS Profile anodized 0,5 m	49.44 11 01	1550
GTS Profile anodized 1 m	49.44 11 02	3100
GTS Profile anodized 2 m*	49.44 11 03	6200
GTS Profile anodized, variable length (please specify)	49.44 99 99	

* without threaded hole

Load diagram

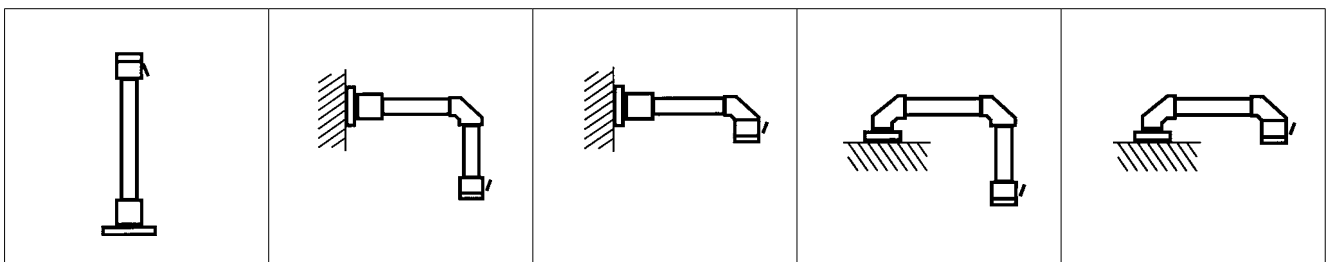


Note: the vertical length of the profile is responsible for the load of the complete suspension system (lever arm!).

Further information for this on request. The values in the above load diagram are guilty to an execution hanging or standing.

The declarations of weight are a summary from installation weight, Commander and all components and tubes between Commander and angle.

System structure

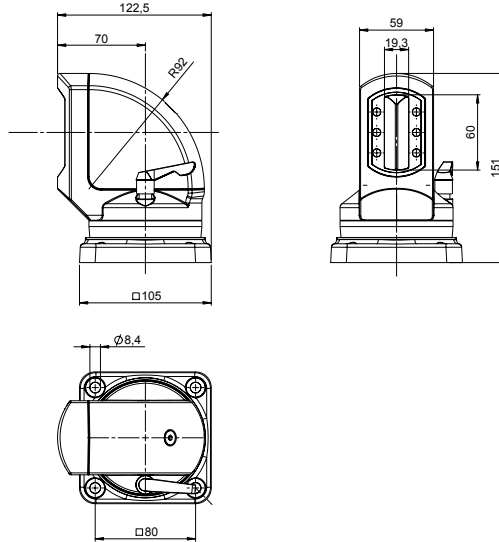


Components

Top-mounted joint



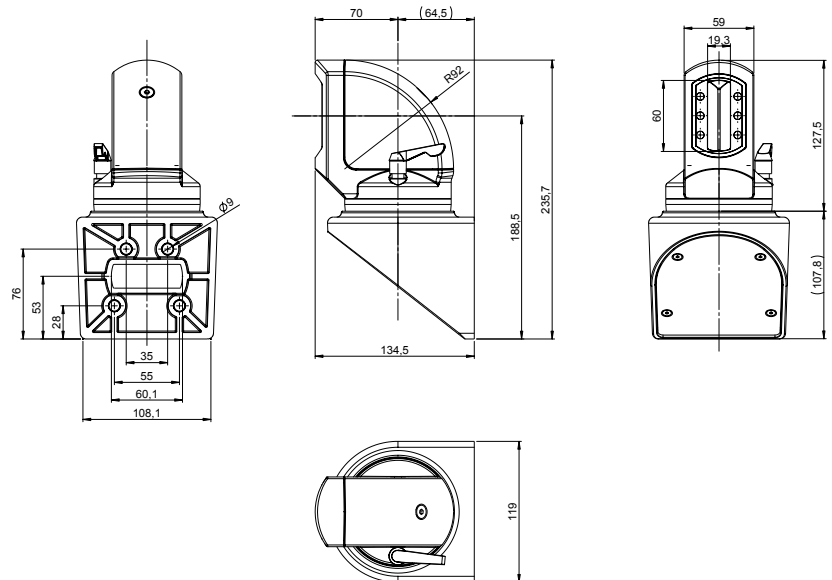
Order No.	Execution
49.44 66 00	Cast aluminium with flange mounting. Swivelling range to 330°



Wall hinge



Order No.	Execution
49.44 70 00	Cast aluminium with plain bearing. Swivelling range 330°



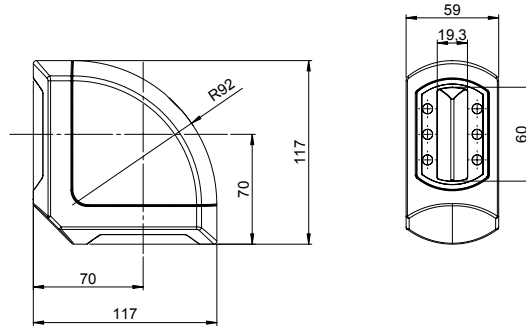
GTS

Components

Angle



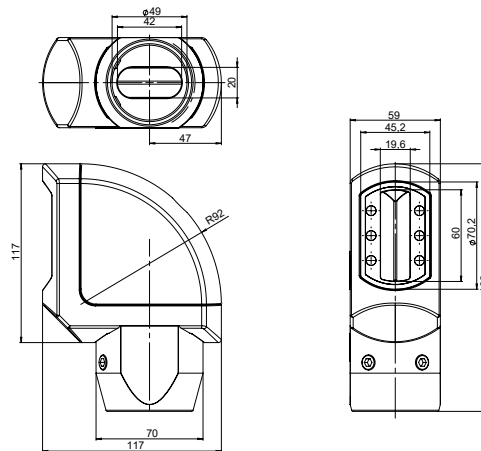
Order No.	Execution
49.44 71 00	Cast aluminium, angle 90°, incl. lid



Angle GTN II / GTS



Order No.	Execution
49.44 71 49	for combination GTS and GT 48/2



Components

Foot stand

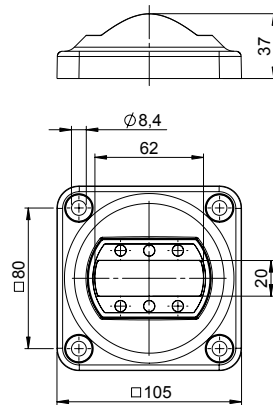


Order No.

Execution

49.44 72 00

Cast aluminium, fixed version, for floor mounting or wall mounting with rigid outlet



Foot stand turnable

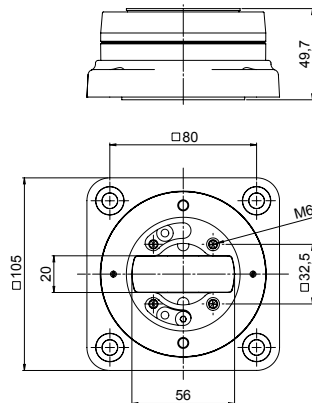


Order No.

Execution

49.44 72 21

Cast aluminium with adjustable stop for direct connection onto machine and command unit

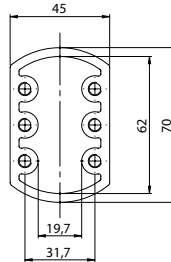


Components

Profile, RAL 7035



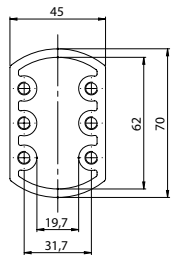
Order No.	Execution
49.44 10 01	0.5 m Aluminium extrusion profile
49.44 10 02	1 m Aluminium extrusion profile
49.44 10 03	2 m Aluminium extrusion profile
49.44 10 99	Aluminium extrusion profile, variable length (please specify)



Profile, anodized



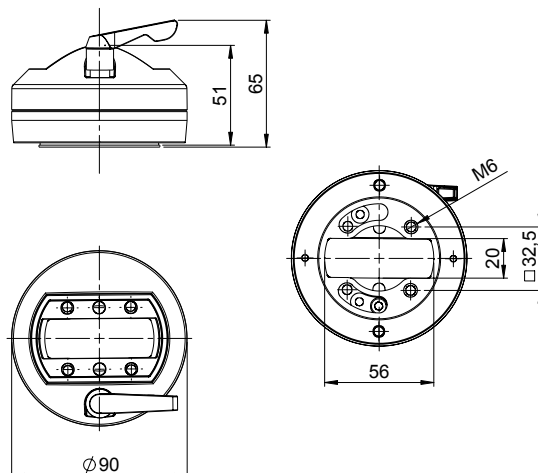
Order No.	Execution
49.44 11 01	0.5 m Cast aluminium extrusion profile
49.44 11 02	1 m Cast aluminium extrusion profile
49.44 11 03	2 m Cast aluminium extrusion profile
49.44 11 99	Cast aluminium extrusion profile, variable length (please specify)



Coupling



Order No.	Execution
49.44 73 00	Cast aluminium, Swivelling range 330°

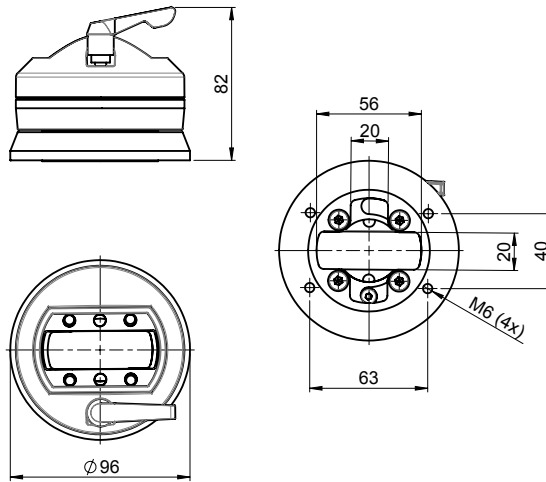


Components

Coupling Siemens Pro



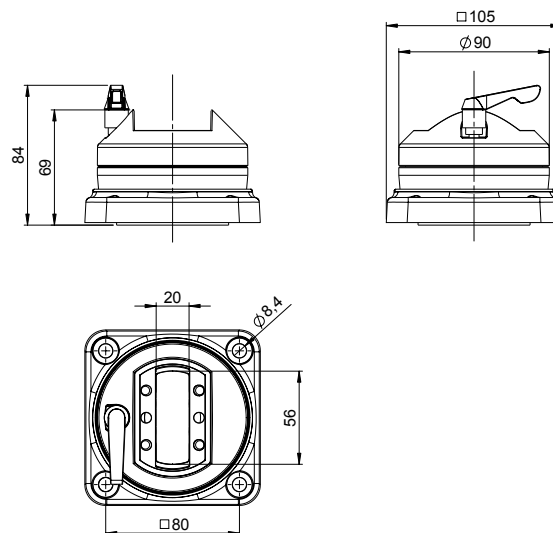
Order No.	Execution
49.44 73 02	for direct connecting of Siemens PRO command units. Diecast aluminium, coupling mounting onto Siemens base adaption; Swivelling range 330°



Flange coupling



Order No.	Execution
49.44 72 00	Diecast aluminium with adjustable stop position between machine and control panel

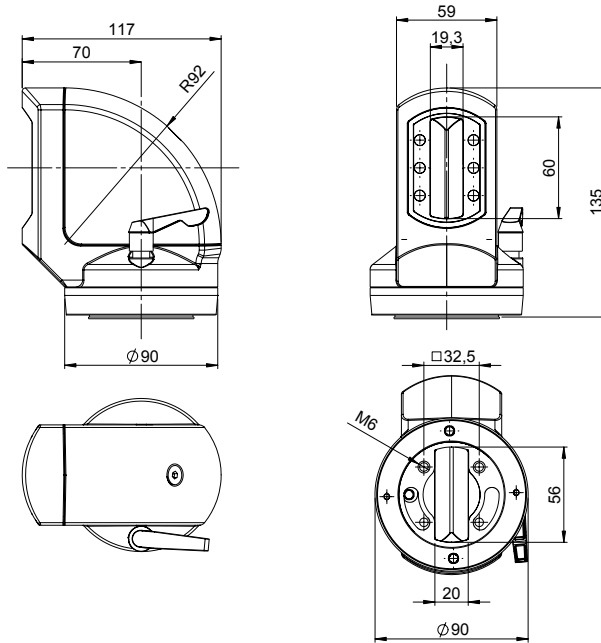


Components

Angle coupling



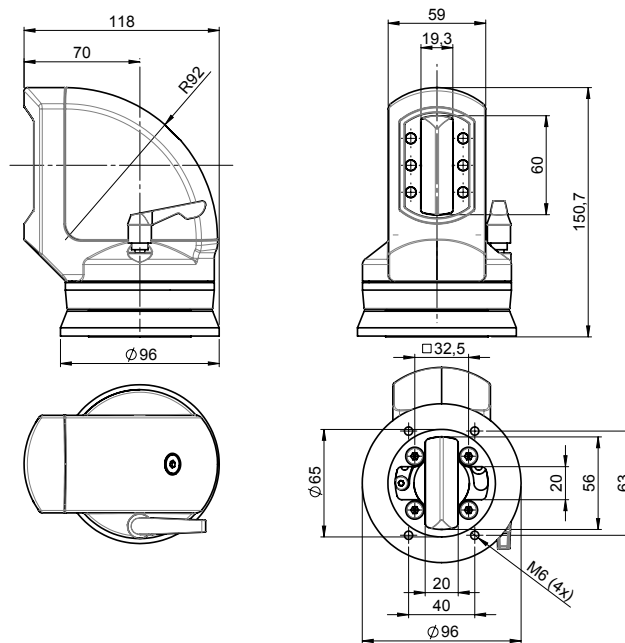
Order No.	Execution
49.44 75 00	Combination of angle und coupling for horizontal tube exit. Diecast aluminium, Swivelling range 330°



Angle coupling Siemens Pro



Order No.	Execution
49.44 75 02	for direct connecting of Siemens PRO command units. Diecast aluminium, coupling mounting onto Siemens baseadaption; Swivelling range 330°



Components

Adapter plate Siemens Pro



Order No.

49.44 00 01

Execution

For connecting GTS system components (e.g. inclining adapter) with Siemens PRO command units (with GTS coupling Siemens PRO and GTS angle coupling Siemens Pro not necessary)

Inclining adapter



Order No.

49.44 80 00

Execution

Diecast aluminium element with bellows and gasket. Inclining range from 0° to 45° continuously adjustable. Fixing with screws between enclosure and coupling.

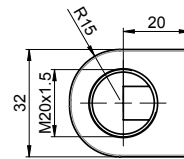
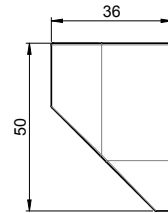
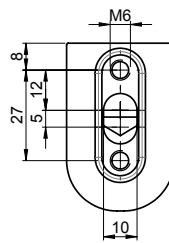
Signal light adaptation

Components

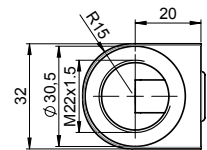
Base connection element for suspension systems, command units and cabinets



Order No.	Execution
49.00 01 01	Signal light adaptation with thread M20x1.5 mm
49.00 01 02	Signal light adaptation with thread M22x1.5 mm



49.00 01 01



49.00 01 02

Base connection element for suspension systems, command units and cabinets



Order No.	Execution
49.00 01 03	Signal light adaption with tube Ø 25 mm, length = 250 mm
49.00 01 04	Signal light adaption with tube Ø 25 mm, length = 150 mm

