



- + Enclosure system for control and display fittings
- + Variable size available in width and depth
- + All-round adaptation capabilities for accessories
- + Front panel insertion from front and rear

### Included in delivery

Enclosure body with rear panel or door, front panel fixing set, cover profile and T-groove cover.

## Technical data

<b>Material</b>	Profile: DIN EN 573 EN AW-AMgSi Front plate, rear wall: DIN EN 573 EN AW-AMg3 Corner pieces: DIN EN 1706 EN AC-AISI 12 (Fe)
<b>Painting</b>	Powder coating
<b>Colour</b>	RAL 7035, light grey Handle tube: powdered RAL 3003, ruby red
<b>Ingress protection</b>	IP65 to EN 60529
<b>Temperature range</b>	-30 °C to +80 °C



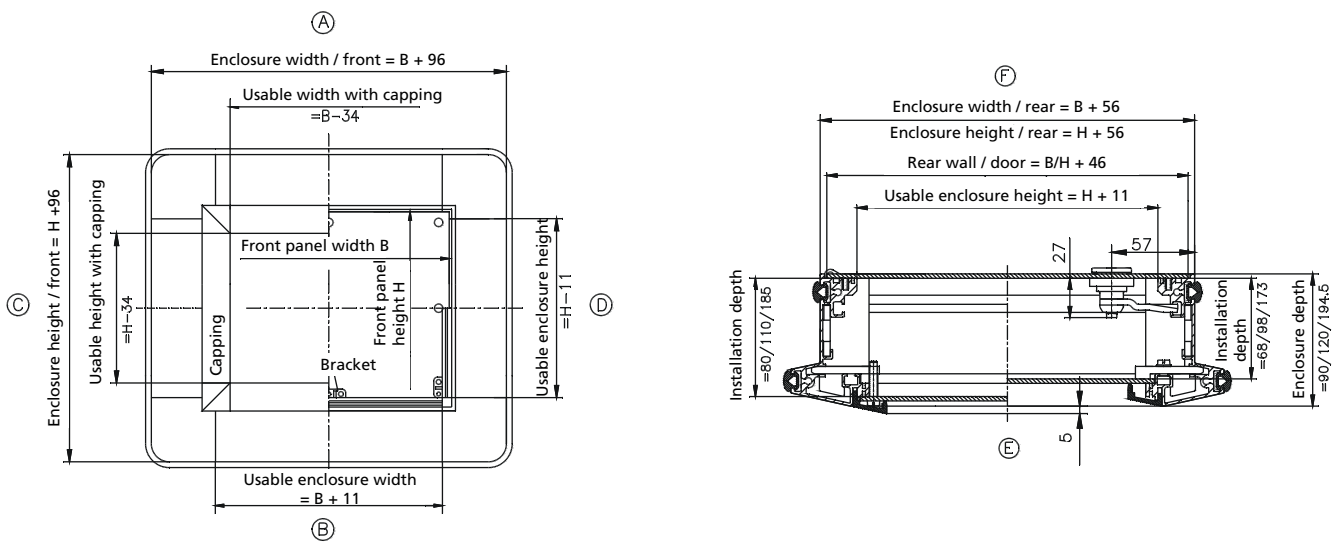
# SL 2000

## Product range

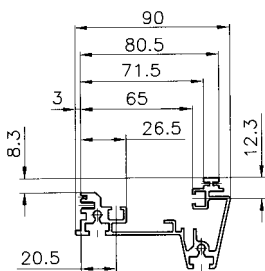
Front plate dimensions H x W (mm)	Profile 1 Mounting depth 80,5 mm	Weight (g)	Profile 2 Mounting depth 110 mm	Weight (g)	Profile 3 Mounting depth 185 mm	Weight (g)	Front plate with drill hole (insert from front)	Weight (g)	Front plate without drill hole (insert from rear)	Weight (g)
Rear wall screwed										
267 x 483	<b>19.50 65 01</b>	4700	<b>19.50 95 01</b>	5500	<b>19.50 19 01</b>	6700	<b>19.60 00 01</b>	1050	<b>19.60 00 11</b>	1030
312 x 483	<b>19.51 65 01</b>	5100	<b>19.51 95 01</b>	5900	<b>19.51 19 01</b>	7100	<b>19.60 01 01</b>	1200	<b>19.60 01 11</b>	1220
356 x 483	<b>19.52 65 01</b>	5400	<b>19.52 95 01</b>	6300	<b>19.52 19 01</b>	7500	<b>19.60 02 01</b>	1400	<b>19.60 02 11</b>	1400
155 x 483	<b>19.53 65 01</b>	4100	<b>19.53 95 01</b>	4600	-	-	<b>19.60 04 01</b>	600	<b>19.60 04 11</b>	600
Special sizes*	<b>19.59 65 01</b>		<b>19.59 95 01</b>		<b>19.59 19 01</b>		<b>19.60 03 01</b>		<b>19.60 03 11</b>	
Door at rear										
267 x 483	<b>19.50 65 00</b>	4900	<b>19.50 95 00</b>	5600	<b>19.50 19 00</b>	6600	<b>19.60 00 01</b>	1050	<b>19.60 00 11</b>	1030
312 x 483	<b>19.51 65 00</b>	5200	<b>19.51 95 00</b>	6000	<b>19.51 19 00</b>	7200	<b>19.60 01 01</b>	1200	<b>19.60 01 11</b>	1220
356 x 483	<b>19.52 65 00</b>	5500	<b>19.52 95 00</b>	6400	<b>19.52 19 00</b>	7600	<b>19.60 02 01</b>	1400	<b>19.60 02 11</b>	1400
155 x 483	<b>19.53 65 00</b>	4200	<b>19.53 95 00</b>	4700	-	-	<b>19.60 04 01</b>	600	<b>19.60 04 11</b>	600
Special sizes*	<b>19.59 65 00</b>		<b>19.59 95 00</b>		<b>19.59 19 00</b>		<b>19.60 03 01</b>		<b>19.60 03 11</b>	

\* Please specify front panel dimensions

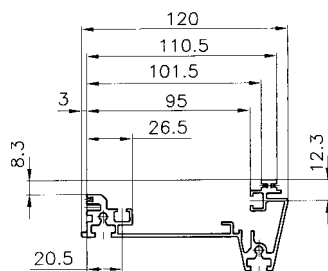
## Technical details



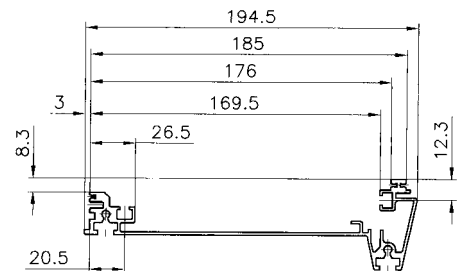
## Profile



Profile 1



Profile 2

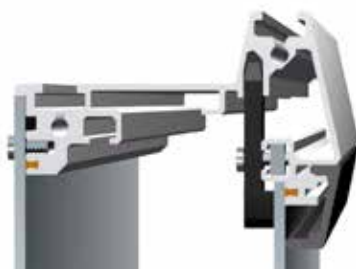


Profile 3

## Front plate fastening



Front panel installation screwed from front



Front panel installation from rear



Front panel installation with stud bolts

## Accessories

### Handle set



Order No.	Execution
19.60 20 01	Set = 2 brackets, 1 tube, L = 256 mm
19.60 20 02	Handle corner set = 3 brackets, 1 tube, L = 556/395 mm
19.60 20 06	Set = 2 brackets, 1 tube, L = 472 mm
19.60 20 04	Set = 2 brackets, 1 tube, L = 301 mm
19.60 20 05	Set = 2 brackets, 1 tube, L = 345 mm
19.60 20 99	Set = 2 brackets, 1 tube, special length

### Coupling flange



Order No.	Execution
19.60 20 03	Profile 1 for GT 48/2 and GTK electronic (GTK electronic only 49.45 73 00 and 49.45 75 00)
19.60 20 11	Profile 2 for GT 48/2 and GTK electronic
19.60 20 12	Profile 3 for GT 48/2 and GTK electronic
19.60 20 07	Profile 2 for GT 50/2, GT 60/2 and GTN II
19.60 20 08	Profile 3 for GT 50/2, GT 60/2 and GTN II
19.60 20 13	Profile 3 for GT 80/2 and GTK 80
19.60 20 14	Profile 2 for GT 80/2
19.60 20 15	Profile 1 for GTS
19.60 20 16	Profile 2 for GTS

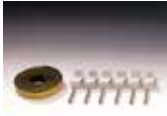
### Control attachment set



Order No.	Execution
19.59 00 11	15° inclination fixed
19.59 00 12	30° inclination fixed
19.59 00 13	adjustable
19.59 00 98	Control attachment set, 15° inclination fixed, special length*
19.59 00 99	Control attachment set, 30° inclination fixed, special length*

## Accessories

### Control panel installation set



Order No.	Execution
19.60 10 03	for profile 3, (6 pcs)
19.60 10 00	for profile 1 and 2 (6 pcs)

### Hinge set



Order No.
19.60 10 08

### Quick fastener set



Order No.	Execution
19.60 10 07	für Frontplatte (Set = 12 Stk)

### Linking bar



Order No.	Execution
19.59 00 20	483 mm
19.59 00 21	Special length

### Spring nut set

Order No.	Execution
10.03 60 01	M5 (8 pcs)

### Fixing set



Order No.	Execution
19.60 10 01	Fixing set 1 (12 spring nuts, brackets, screws)
19.60 10 02	Fixing set 2 (30 spring nuts, brackets, screws)

Further accessories see Commander system accessories

Company \_\_\_\_\_ Telephone \_\_\_\_\_  
 Contact \_\_\_\_\_ Telefax \_\_\_\_\_  
 Address \_\_\_\_\_ E-Mail \_\_\_\_\_  
 Project \_\_\_\_\_ Quantity \_\_\_\_\_ Lot size \_\_\_\_\_

**Operation enclosures**

- Execution**  Door  rear wall screwed  
**Dimensions**  Profile 1  Profile 2  Profile 3  
 Recessed rear panel for \_\_\_\_\_ mm mounting depth  
 Please specify front panel dimensions or manufacturer/controller type:



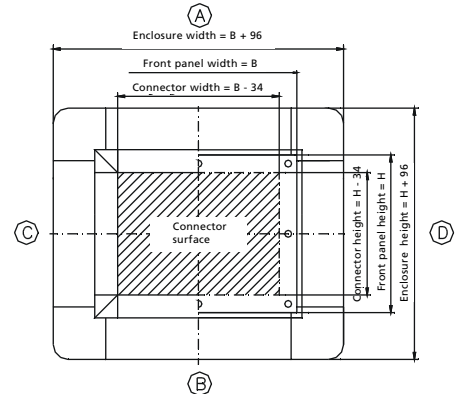
W x H (mm) \_\_\_\_\_ x \_\_\_\_\_  
 or manufacturer/type \_\_\_\_\_



W x H (mm) \_\_\_\_\_ x \_\_\_\_\_  
 or manufacturer/type \_\_\_\_\_



W x H (mm) \_\_\_\_\_ x \_\_\_\_\_  
 or manufacturer/type \_\_\_\_\_



- Front panel**  3 mm, with drill holes  3 mm, without drill holes  other \_\_\_\_\_ mm  
 Finish in accordance with drawing (please attach)  
 or state manufacturer/controller type: \_\_\_\_\_

**Keyboard enclosures**

- Execution**  Door  rear wall screwed  
**Dimensions**  Profile 1  Profile 2  
 Please specify the number and dimensions of the front panel or the manufacturer and controller type.



W x H (mm) \_\_\_\_\_ x \_\_\_\_\_ or manufacturer/type \_\_\_\_\_



W x H (mm) \_\_\_\_\_ x \_\_\_\_\_ or manufacturer/type \_\_\_\_\_

- Front panel**  3 mm, with drill holes  3 mm, without drill holes  other \_\_\_\_\_ mm  
 Finish in accordance with drawing (please attach)  
 or state manufacturer/controller type: \_\_\_\_\_

- Console attachment set**  standard \_\_\_\_\_ (Order No.)  Custom length \_\_\_\_\_ mm

- Suspension system**  GTK electronic / GT 48/2, on side \_\_\_\_\_  GT 50/2 / GT 60/2, on side \_\_\_\_\_  
 GT 80/2 / GTK 80, on side \_\_\_\_\_  GTN II, on side \_\_\_\_\_  
 GTS, on side \_\_\_\_\_  other \_\_\_\_\_ on side \_\_\_\_\_  
 Moterm Operational enclosure from 236 mm front panel width  
 Console enclosure (fixed inclination) from 440 mm front panel width  
 Console enclosure (fixed inclination) from 580 mm front panel width

- Handle set**  Standard \_\_\_\_\_ (Order No.) Mounting side \_\_\_\_\_  
 Special length \_\_\_\_\_ mm Mounting side \_\_\_\_\_

- Colour**  Standard (RAL 7035, handle red RAL 3003)  Special colour (RAL) \_\_\_\_\_

- Other accessories**  Disk mounting bay, mounting side \_\_\_\_\_  Hinge set, mounting side \_\_\_\_\_  
 Keyboard holder  Document holder  Separating strip, number \_\_\_\_\_  
 Panel mounting for profile 1  Panel mounting for profile 2  Panel mounting for profile 3  
 Fixing set 12-piece  Fixing set 30-piece  Quick fixing set  
 Spring nut set  Rubber cover narrow 7 mm  Rubber cover narrow 5 mm

