

Polycarbonate flange



- Light plastic enclosure for industrial applications with flange pre-embossing
- Combination options with other polycarbonate flange enclosures
- Snap lock technology and flange quick-fixing-system

Included in delivery

Complete closed enclosure body with flange break-out points, lid with plastic quick release fastener; 4 threaded inserts for internal fixing.

Technical data

Material:

Polycarbonate

Colour:

Enclosure: RAL 7032, pebble grey

Ingress protection:

IP 54 to EN 60529

Impact resistance:

7 Joule to EN 60079-0
(flange pre-embossing excepted)

Flammability:

enclosure: V0 / self-extinguishing, UL 94

Insulation:

fully insulated to VDE 0100

Disruptive strength:

enclosure: >18 KV/mm, IEC 60243-1

Seal:

CR round seal

Toxicity:

low-halogen

Surface resistance:

>10¹⁵ Ohm, IEC 60093

Temperature range:

-40°C to +100°C (incl. seals)

Product range

Type	Dimensions W x L x H	Flange openings	Enclosure with lid 20 mm
17.01	170 x 134 x 130	2	17.01 10 00
17.02	170 x 170 x 130	4	17.02 10 00
17.03	170 x 269 x 130	4	17.03 10 00
17.04	269 x 269 x 130	4	17.04 10 00
17.05	269 x 540 x 130	6	17.05 10 00
17.06	269 x 441 x 130	4	17.06 10 00

* transparent lid on request

Accessories (depending on type)

Type	DIN rail TS 32	DIN rail TS 35	Earth rail	Mounting plate
17.01	10.06 17 04	10.06 17 24	10.06 21 00	17.01 60 00
17.02	10.06 17 04	10.06 17 24	10.06 21 00	17.02 60 00
17.03	10.06 17 01	10.06 17 22	10.06 21 01	17.03 60 00
17.04	10.06 17 02	10.06 17 22	10.06 21 01	17.04 60 00
17.05	10.06 17 03	10.06 17 23	10.06 21 02	17.05 60 00
17.06		10.06 17 25	10.06 20 11	17.06 60 00

Accessories (for all types)

Blind flange I	17.00 31 00
Blind flange II	17.00 32 00
PG flange II, 19 x PG9/PG13,5	17.00 34 00
PG flange II, 16 x PG11/PG16	17.00 35 00
PG flange II, 10 x PG9/PG13,5; 4 x PG11/PG16; 2 x PG21/PG29	17.00 33 00
Connection flange I	17.00 36 00
Connection flange II	17.00 37 00
Mounting bracket (set 4 of pcs.), 2 sets required for type 17.05	17.00 42 00
Additional threaded inserts (set of 10 pcs.)	10.03 50 03
External mounting brackets (set of 4 pcs.)	10.03 11 04
Replacement fastening wedges (set of 10 pcs.)	17.00 41 00

Terminal mounting

	Phoenix														Earth connections as required				
	DIN rail TS 15																		
DIN rail TS 35	X	X	X	X	X	X													
Voltage (V)	1000	1000	1000	1000	1000	1000													
Current (A)	24	32	41	57	76	125													
Nom. cross section (mm ²)	2,5	4	6	10	16	35													
Terminal width (mm)	5,2	6,2	8,2	10,2	12,2	16													
Terminal type																			
Type	UT 2,5	UT 4	UT 6	UT 10	UT 16	UT 35													
17.01 10 00	22	19	14	11	9	7													
17.02 10 00	22	19	14	11	9	7													
17.03 10 00	37	31	23	18	15	12													
17.04 10 00	37*	31*	23*	18*	15*	12*													
17.05 10 00	89*	74*	56*	45*	37*	30*													
17.06 10 00	69*	58*	44*	35*	29*	23*													

* 2 DIN rails possible

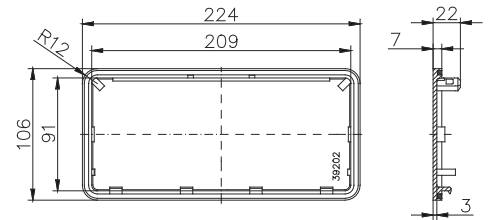
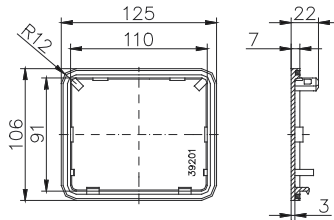
Polycarbonate Flange

Accessories



Blind flange

Order No.	Version
17.00 31 00	Blind flange I (125 x 106 mm)
17.00 32 00	Blind flange II (224 x 106 mm)



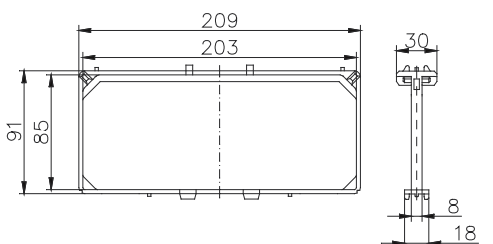
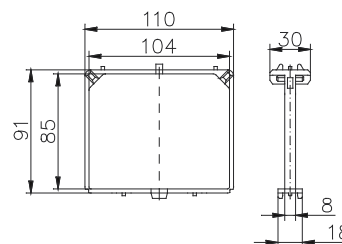
Threaded flange with pre-embossed holes

Order No.	Version
17.00 34 00	19 x PG 9 / PG 13,5
17.00 35 00	16 x PG 11 / PG 16
17.00 33 00	10 x PG 9 / PG 13,5; 4 x PG 11 / PG 16; 2 x PG 21 / PG 29



Connection flange to connect two polycarbonate flange enclosures

Order No.	Version
17.00 36 00	Connection flange I
17.00 37 00	Connection flange II

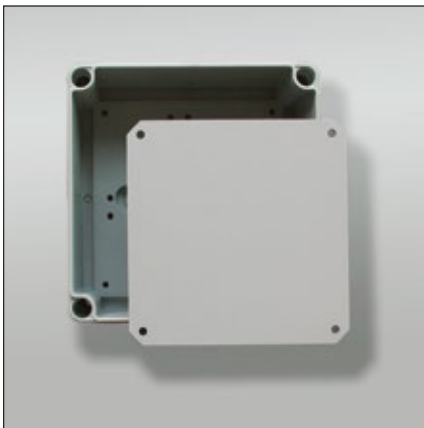
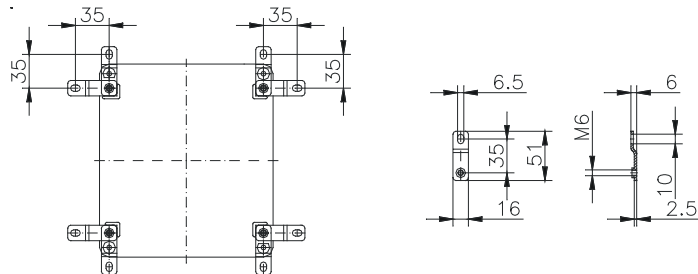


Accessories



External mounting brackets
set = 4 pcs.

Order No. **10.03 11 04**



Mounting plates
for fitting electro-mechanical components



Mounting bracket
set = 4 pcs.

Order No. **17.00 42 00**

Type: **17.01 10 00**

External dimensions: **170 x 134 x 130 mm**

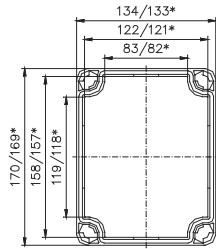
Weight: **793 g**

DIN rail length in mm	max. fitting length in mm	Mounting plate (thickness in mm)	External mounting brackets	Hinged lid	No. of flanges			
TS 35								
140	115	3	•	•	2			

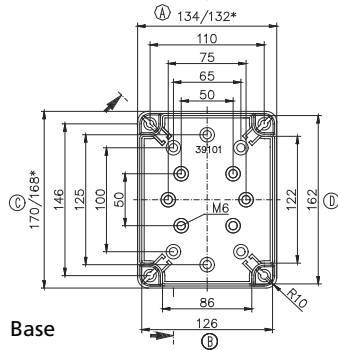
Maximum number of cable glands to DIN 50262*

M	Corner dim.	Side		PG	Corner dim.	Side	
		A/B	C/D			A/B	C/D
12	17,25	16	27	7	17,25	16	27
16	25,30	8	12	9	21,85	12	16
20	27,60	6	10	11	25,30	8	12
25	37,95	3	5	13,5	27,60	6	10
32	48,30	2	4	16	31,05	4	9
40	60,95	1	2	21	37,95	3	5
50	69,00	1	1	29	48,30	2	4
63	74,75		1	36	60,95	1	1
				42	69,00	1	1
				48	74,75		1

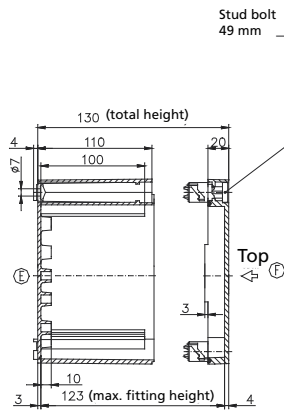
Lid



* = Conical form tapering downwards
Free dimensions-tolerance to DIN 16901 - 130



Base



Type: **17.02 10 00**

External dimensions: **170 x 170 x 130 mm**

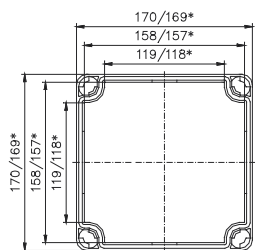
Weight: **904 g**

DIN rail length in mm	max. fitting length in mm	Mounting plate (thickness in mm)	External mounting brackets	Hinged lid	No. of flanges			
TS 35								
140	115	3	•	•	4			

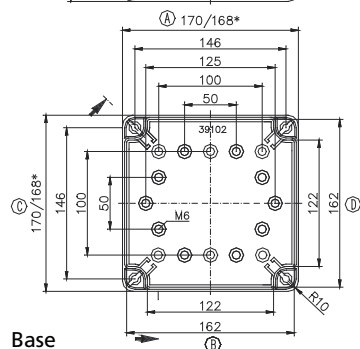
Maximum number of cable glands to DIN 50262*

M	Corner dim.	Side		PG	Corner dim.	Side	
		A/B	C/D			A/B	C/D
12	17,25	27	27	7	17,25	27	27
16	25,30	12	12	9	21,85	16	16
20	27,60	10	10	11	25,30	12	12
25	37,95	5	5	13,5	27,60	10	10
32	48,30	4	4	16	31,05	9	9
40	60,95	2	2	21	37,95	5	5
50	69,00	1	1	29	48,30	4	4
63	74,75	1	1	36	60,95	1	1
				42	69,00	1	1
				48	74,75	1	1

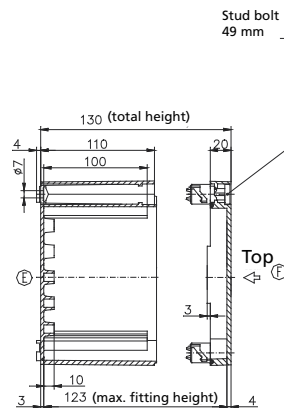
Lid



* = Conical form tapering downwards
Free dimensions-tolerance to DIN 16901 - 130



Base



Type: **17.03 10 00**

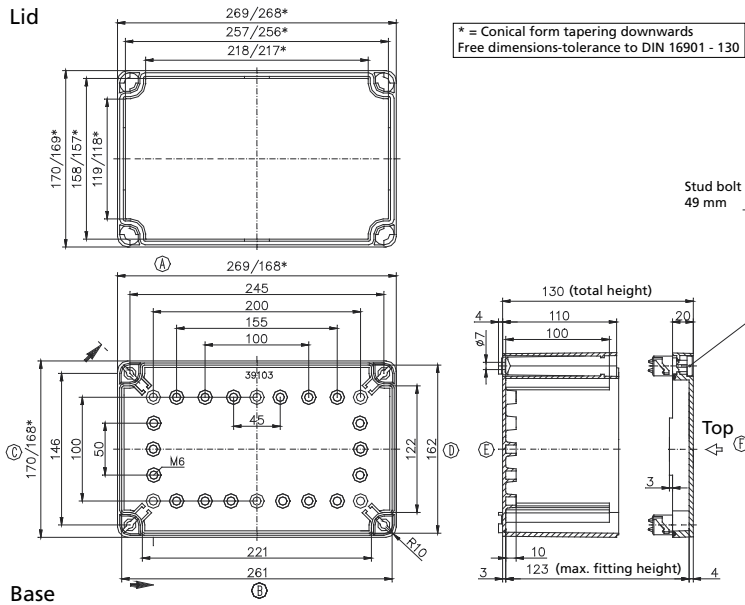
External dimensions: **170 x 269 x 130 mm**

Weight: **1209 g**

DIN rail length in mm	max. fitting length in mm	Mounting plate (thickness in mm)	External mounting brackets	Hinged lid	No. of flanges			
TS 35			•	•	4			
215	190	3	•	•	4			

Maximum number of cable glands to DIN 50262*

M	Corner dim.	Side		PG	Corner dim.	Side	
		A/B	C/D			A/B	C/D
12	17,25	60	27	7	17,25	60	27
16	25,30	28	12	9	21,85	35	16
20	27,60	21	10	11	25,30	28	12
25	37,95	12	5	13,5	27,60	21	10
32	48,30	8	4	16	31,05	18	9
40	60,95	4	2	21	37,95	11	5
50	69,00	3	1	29	48,30	8	4
63	74,75	2	1	36	60,95	3	1
				42	69,00	3	1
				48	74,75	2	1



Type: **17.04 10 00**

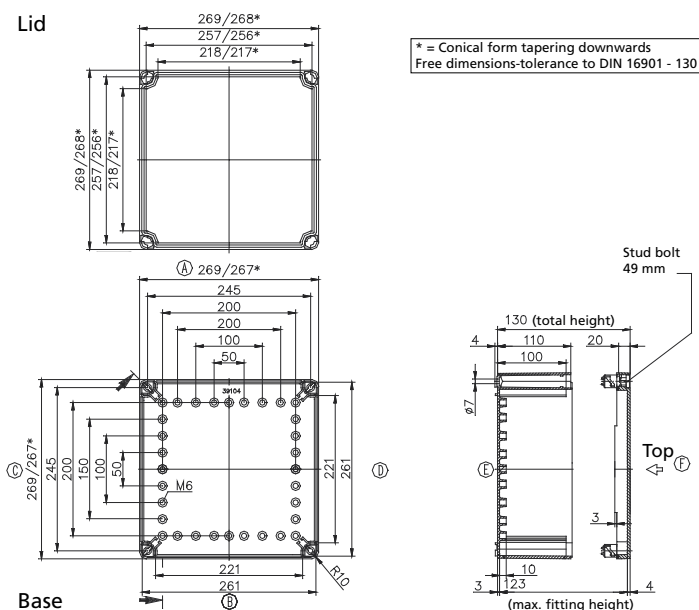
External dimensions: **269 x 269 x 130 mm**

Weight: **1707 g**

DIN rail length in mm	max. fitting length in mm	Mounting plate (thickness in mm)	External mounting brackets	Hinged lid	No. of flanges			
TS 35			•	•	4			
215	190	3	•	•	4			

Maximum number of cable glands to DIN 50262*

M	Corner dim.	Side		PG	Corner dim.	Side	
		A/B	C/D			A/B	C/D
12	17,25	60	60	7	17,25	60	60
16	25,30	28	28	9	21,85	35	35
20	27,60	21	21	11	25,30	28	28
25	37,95	12	12	13,5	27,60	21	21
32	48,30	8	8	16	31,05	18	18
40	60,95	4	4	21	37,95	11	11
50	69,00	3	3	29	48,30	8	8
63	74,75	2	2	36	60,95	3	3
				42	69,00	3	3
				48	74,75	2	2



Type: **17.05 10 . .**

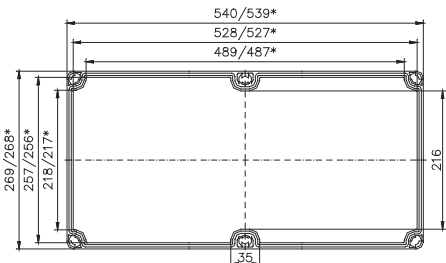
External dimensions: **269 x 540 x 130 mm**

Weight: **3150 g**

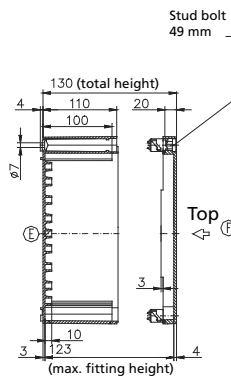
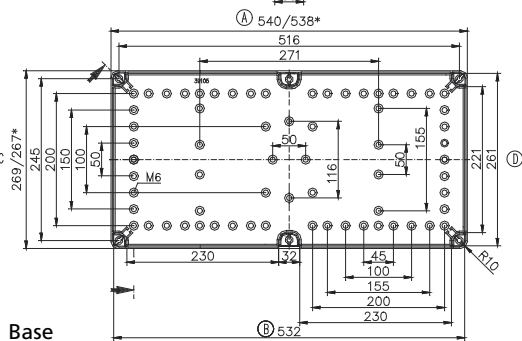
DIN rail length in mm	max. fitting length in mm	Mounting plate (thickness in mm)	External mounting brackets	Hinged lid	No. of flanges			
TS 35								
485	450	3	•	•	6			

Maximum number of cable glands to DIN 50262*

Lid



* = Conical form tapering downwards
Free dimensions-tolerance to DIN 16901 - 130



M	Corner dim.	Side		PG	Corner dim.	Side	
		A/B	C/D			A/B	C/D
12	17,25	120	60	7	17,25	120	60
16	25,30	54	28	9	21,85	70	35
20	27,60	42	21	11	25,30	56	28
25	37,95	24	12	13,5	27,60	42	21
32	48,30	16	8	16	31,05	36	18
40	60,95	8	4	21	37,95	22	11
50	69,00	6	3	29	48,30	16	8
63	74,75	4	2	36	60,95	6	3
				42	69,00	6	3
				48	74,75	4	2

Type: **17.06 10 . .**

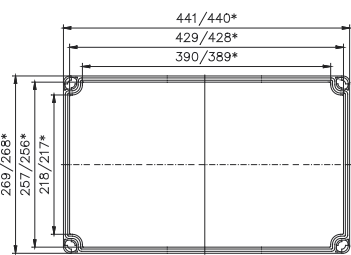
External dimensions: **269 x 441 x 130 mm**

Weight: **2000 g**

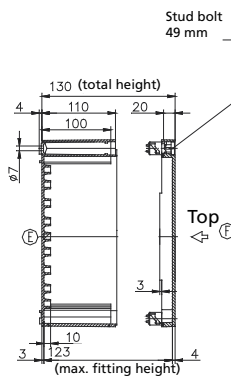
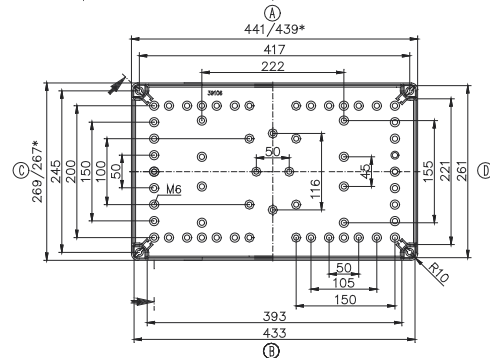
DIN rail length in mm	max. fitting length in mm	Mounting plate (thickness in mm)	External mounting brackets	Hinged lid	No. of flanges			
TS 35								
385	350	3	•	•	4			

Maximum number of cable glands to DIN 50262*

Lid



* = Conical form tapering downwards
Free dimensions-tolerance to DIN 16901 - 130



M	Corner dim.	Side		PG	Corner dim.	Side	
		A/B	C/D			A/B	C/D
12	17,25	60	60	7	17,25	60	60
16	25,30	28	28	9	21,85	35	35
20	27,60	21	21	11	25,30	28	28
25	37,95	12	12	13,5	27,60	21	21
32	48,30	8	8	16	31,05	18	18
40	60,95	4	4	21	37,95	11	11
50	69,00	3	3	29	48,30	8	8
63	74,75	2	2	36	60,95	3	3
				42	69,00	3	3
				48	74,75	2	2

Base