

# Euromas PC



Detailed product information can be found on [www.bopla.de](http://www.bopla.de)



- 36 sizes
- 19 different M...V0 versions corresponding to UL 94 V0
- All M versions are listed under UL file no. 196 706
- Terminals and mounting on request
- Fixing screws for DIN rails or mounting panels included in scope of delivery

#### Colour:

Light grey, similar to RAL 7035; special colours on request

#### Protection class:

Depending on the model: IP 65 or IP 66/DIN EN 60529; IP 67 available on request for some sizes

#### Enclosure material:

ABS, PC (UV stabilised) and selected sizes in PC UL 94 V0 (additional UL 94 V0 versions on request), seal made of CR; for details see Technical Information

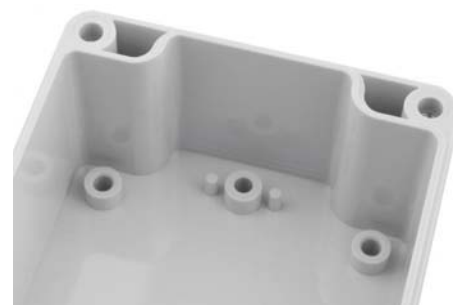
## Classic enclosure made of polycarbonate or lower-cost ABS



Large processing areas and versatile mounting options for connectors, switches and keys.



Two different lids (grey or crystal-clear) allow use as displays or operating enclosures.



Circuit boards can be securely fixed in the base by means of screw domes.



The enclosure can be fitted to the wall by means of the screw channels in the base or wall brackets.



The enclosure can also be supplied on request with quick-release fastener screws.



Optional hinges allow easy opening/closing of the lid.



The factory-fitted seal can be replaced with a silicone seal, which improves temperature resistance.

## Euromas | Enclosures



### Enclosure, polycarbonate

Model	Order no.	A	B	C	a1	a2	b1	b2	b3	c1	c2	IP
M 205	02205000	52	50	35	46,4	30	44,4	28,2		10	31	66
M 205 G	02205400	52	50	35	46,4	30	44,4	28,2		10	31	66
M 206	02206000	65	50	35	59,4	43	44	27,7		10	29,5	66
M 206 G	02206200	65	50	35	59,4	43	44	27,7		10	29,5	66
M 208	02208000	98	64	36,4	89,4	74	55,4	32		9,2	29,4	66
M 210	02210000	82	80	55	75,3	56,6	73,3	36,5		15	49	66
M 210 G	02210100	82	80	55	75,3	56,6	73,3	36,5		15	49	66
M 215	02215000	120	80	55	113,3	94,5	73,3	36,5		15	49,5	66
M 215 G	02215100	120	80	55	113,3	94,5	73,3	36,5		15	49,5	66
M 216	02216000	120	80	60	113,3	94,5	73,3	36,5		20	54	66
M 216 G	02216100*	120	80	60	113,3	94,5	73,3	36,5		20	54	66
M 217	02217000	122	120	55	115,3	96,5	113,3	76,5		15	48	66
M 217 G	02217200	122	120	55	115,3	96,5	113,3	76,5		15	48	66
M 219	02219000	160	80	60	153,5	134,7	73,5	36,7		20	54	66
M 220	02220000	160	80	55	153,5	134,7	73,5	36,7		15	49	66
M 220 G	02220100	160	80	55	153,5	134,7	73,5	36,7		15	49	66
M 221	02221000	200	120	75	193	174,2	113	74,2		15	68,5	66
M 221 G	02221100	200	120	75	193	174,2	113	74,2		15	68,5	66
M 223	02223000	200	150	75	193	174	143	105		15	68,5	65
M 223 G	02223100	200	150	75	193	174	143	105		15	68,5	65
M 225	02225000	82	80	85	75	56	73	36		15	79	66
M 225 G	02225100	82	80	85	75	56	73	36		15	79	66
M 226	02226000	120	80	85	113	94	73	36		15	79,5	65
M 226 G	02226100	120	80	85	113	94	73	36		15	79,5	65
M 227	02227000	122	120	85	115	96,2	113	76,2		15	78	65
M 227 G	02227100	122	120	85	115	96,2	113	76,2		15	78	65
M 228	02228000	122	120	105	115	96,2	113	76,2		35	98,5	66
M 228 G	02228100	122	120	105	115	96,2	113	76,2		35	98,5	66
M 230	02230000	120	80	90	113	94	73	36		20	84	66
M 231	02231000	160	80	85	153	134	73	36		15	79	66
M 231 G	02231100	160	80	85	153	134	73	36		15	79	66
M 235	02235000	160	80	90	153	134	73	36		20	84	65
M 237	02237000	200	120	90	193	174,2	113	74,2		30	83,5	66
M 237 G	02237100	200	120	90	193	174,2	113	74,2		30	83,5	66
M 238	02238000	160	120	90	153	134,2	113	74,2		30	83,5	66
M 238 G	02238100	160	120	90	153	134,2	113	74,2		30	83,5	66
M 2381	02238200	160	120	75	153	134,2	113	74,2		15	68,5	65
M 2381 G	02238300	160	120	75	153	134,2	113	74,2		15	68,5	66
M 240	02240000	250	160	90	243	224	153	115	134	15	84	65
M 240 G	02240100	250	160	90	243	224	153	115	134	15	84	65
M 2401	02240200	240,3	160,3	90	233	214,7	153	116,7	134,7	15	84	66
M 2401 G	02240300	240,3	160,3	90	233	214,7	153	116,7	134,7	15	84	65
M 241	02241000	250	160	119	243	224	153	115	134	44	113	66
M 242	02242000	240,5	120	100,5	233,5	216,2	113	76,9		25	94	66
M 242 G	02242100	240,5	120	100,5	233,5	216,2	113	76,9		25	94	65
M 243	02243000	240,3	160,3	120	233	214,7	153	116,7	134,7	45	113,5	66
M 243 G	02243100	240,3	160,3	120	233	214,7	153	116,7	134,7	45	113,5	66
M 244	02244000	340	150	100	329,3	301,3	139,3	87,3		20	92,5	66
M 244 G	02244100	340	150	100	329,3	301,3	139,3	87,3		20	92,5	66
M 245	02245000	340	150	120	329,3	301,3	139,3	87,3		40	113	66

\* = Available on request

# Euromas | Enclosures

## Enclosure, polycarbonate

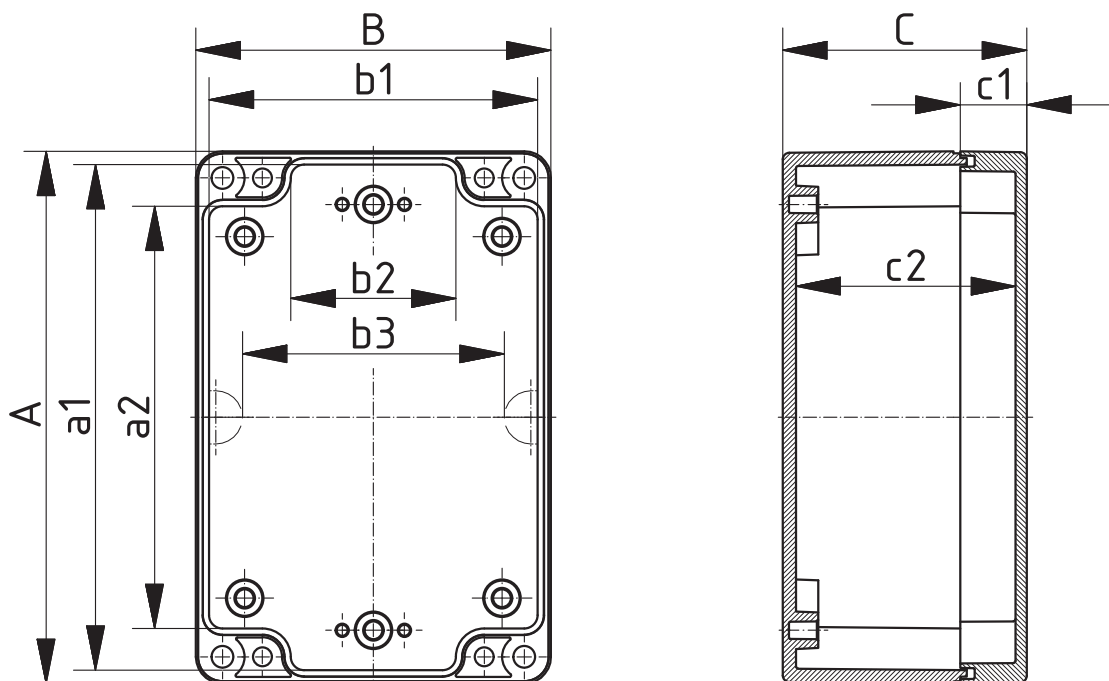
Model	Order no.	A	B	C	a1	a2	b1	b2	b3	c1	c2	IP
M 246	02246000	160	120	140	153	134,2	113	74,2		80	133,5	66
M 246 G	02246100	160	120	140	153	134,2	113	74,2		80	133,5	66
M 250	02250000	250	160	150	243	224	153	115	134	75	144	66
M 251	02251000	360	160	100	351,7	333,7	151,7	113,7	134,7	25	93,5	66
M 252	02252000	300	230	65	293,1	274,1	223,1	186,1	204,1	10	58,5	65
M 253	02253000	300	230	85	293,1	274,1	223,1	186,1	204,1	30	78,5	65
M 253 G	02253100	300	230	85	293,1	274,1	223,1	186,1	204,1	30	78,5	66
M 254	02254000	300	230	110	293,1	274,1	223,1	186,1	204,1	55	103,5	65
M 254 G	02254100	300	230	110	293,1	274,1	223,1	186,1	204,1	55	103,5	66
M 255	02255000	360	200	149,5	350,3	318,3	190,3	138,3	159,3	49,5	142	66
M 255 G	02255100	360	200	149,5	350,3	318,3	190,3	138,3	159,3	49,5	142	65



Scope of delivery: Lid and base, lid screws made of V2A, self-tapping screws for mounting bosses

Note: G = Design with crystal-clear lid.

IP = Ingress protection acc. to DIN EN 60529



Z-2503224

For accessories, please see the end of the chapter

## Euromas | Enclosures



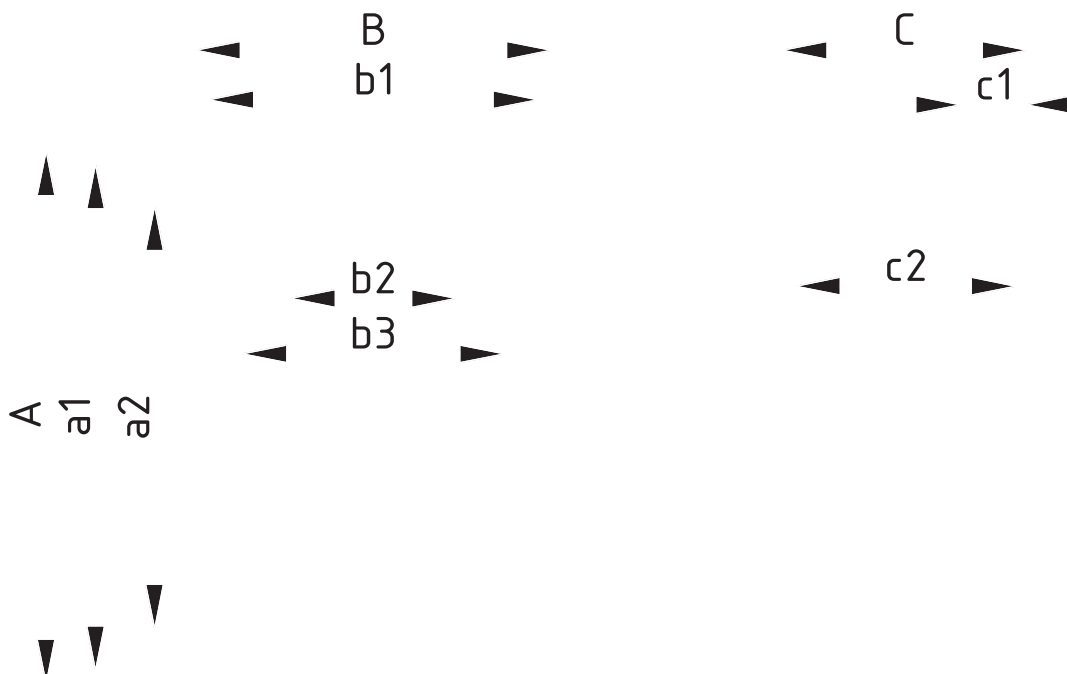
### Enclosures, polycarbonate V0

Model	Order no.	A	B	C	a1	a2	b1	b2	b3	c1	c2	IP
M 205-V0	02205094	52	50	35	46,4	30	44,4	28,2		10	31	66
M 206-V0	02206094	65	50	35	59,4	43	44	27,7		10	29,5	66
M 208-V0	02208094	98	64	36,4	89,4	74	55,4	32		9,2	29,4	66
M 210-V0	02210094	82	80	55	75,3	56,6	73,3	36,5		15	49	66
M 215-V0	02215094	120	80	55	113,3	94,5	73,3	36,5		15	49,5	66
M 217-V0	02217094	122	120	55	115,3	96,5	113,3	76,5		15	48	66
M 220-V0	02220094	160	80	55	153,5	134,7	73,5	36,7		15	49	66
M 221-V0	02221094	200	120	75	193	174,2	113	74,2		15	68,5	66
M 223-V0	02223094	200	150	75	193	174	143	105		15	68,5	65
M 225-V0	02225094	82	80	85	75	56	73	36		15	79	66
M 226-V0	02226094	120	80	85	113	94	73	36		15	79,5	65
M 227-V0	02227094	122	120	85	115	96,2	113	76,2		15	78	65
M 228-V0	02228094	122	120	105	115	96,2	113	76,2		35	98,5	66
M 231-V0	02231094	160	80	85	153	134	73	36		15	79	66
M 237-V0	02237094	200	120	90	193	174,2	113	74,2		30	83,5	66
M 238-V0	02238094	160	120	90	153	134,2	113	74,2		30	83,5	66
M 2401-V0	02240294	240,3	160,3	90	233	214,7	153	116,7	134,7	15	84	66
M 242-V0	02242094	240,5	120	100,5	233,5	216,2	113	76,9		25	94	66
M 255-V0	02255094	360	200	149,5	350,3	318,3	190,3	138,3	159,3	49,5	142	66

Scope of delivery: Lid and base, lid screws made of V2A, self-tapping screws for mounting bosses

Note: V0 = version in UL 94 V0 enclosure material.

IP = Ingress protection acc. to DIN EN 60529



## Euromas accessories

### Mounting plates, laminated paper (Pertinax), galvanised steel for version 260

Model	Order no.	Note
M	22000100	For EM/ET 205, M/T 205
M	22000200	For EM/ET 206, M/T 206
M	22000300	For EM/ET 210, EM/ET 225, M/T 210, M/T 225
M	22000400	For EM/ET 215, M/T 215-216, M/T 226, M/T 230
M	22000500	For EM/ET 217, EM/ET 227, M/T 217, M/T 227-228
M	22000600	For EM/ET 220, EM/ET 231, M/T 219-220, M/T 231-235
M	22000700	For EM/ET 221, EM/ET 237, M/T 221, M/T 237
M	22000800	For EM/ET 223, M/T 223
M	22000900	For EM/ET 239-241, M/T 240, M/T 241, M/T 250
M	22001000	For M/T 2401, M/T 243
M	22001100	For EM/ET 238, M/T 238, M/T 246
M	22001200	For EM/ET 242, M/T 242
M	22001300	For M/T 244-245
M	22001400	For M/T 251
M	22001500	For M/T 252-254
M	22001600	For M/T 255
M	22001610	For M/T 260

Scope of delivery: 1 mounting panel



### Knurled screws

Model	Order no.	Note
RD	22003100	For M/T 210-215, M/T 217, M/T 220-227, M/T 231
RD	22003200	For M/T 240-2401
RD	22003310	For M/T 241, M/T 243

Scope of delivery: 1 set, suitable for one enclosure

Note: Not for use with enclosures with a quick-release fastener.



### Rubber feet, plug-in

Model	Order no.	Note
F	22003300	For M/T 208-260

Scope of delivery: 4 pieces



### Silicone seal for lid

Model	Order no.	Note
SIL	22003500	For M/T 210, M/T 225
SIL	22003600	For M/T 215, M/T 226, M/T 230
SIL	22003700	For M/T 217, M/T 227-228
SIL	22003800	For M/T 219-220, M/T 231-235
SIL	22003900	For M/T 221, M/T 237
SIL	22004100	For M/T 240, M/T 241, M/T 250
SIL	22004200	For M/T 2401, M/T 243
SIL	22004300	For M/T 238, M/T 246
SIL	22004400	For M/T 242
SIL	22004500	For M/T 244-245
SIL	22004600	For M/T 251
SIL	22004700	For M/T 252-254
SIL	22004800	For M/T 255
SIL	22005500	Für M/T 223

Scope of delivery: 1 seal



## Euromas accessories



Wall brackets on rear, screw-on, polycarbonate

Model	Order no.	Note
WL	22004900	For M/T 210-243, M/T 246-253

Scope of delivery: 4 pieces



DIN rails DIN EN 60715 TH 15

Model	Order no.	Note
TS 15	22001800	For M/T 205
TS 15	22001710	For M/T 206
TS 15	22001700	For M/T 210, M/T 225
TS 15	22001900	For M/T 215-217, M/T 226-230
TS 15	22002000	For M/T 219-220, M/T 231-235, M/T 238, M/T 246, P 325, M/T 2381
TS 15	22002100	For M/T 221-223, M/T 237
TS 15	22002402	For M/T 240-243, M/T 250
TS 15	22002720	For M/T 244-245
TS 15	22002820	For M/T 251
TS 15	22002920	For M/T 252-254

Scope of delivery: 1 DIN rail



DIN rails DIN EN 60715 G 32

Model	Order no.	Note
TS 32	22001701	For M/T 210, M/T 225, P 305, P 326
TS 32	22002010	For M/T 219-220, M/T 231-235, M/T 238, M/T 246, P 316, P 325, M/T 2381
TS 32	22002110	For M/T 221-223, M/T 237
TS 32	22002300	For M/T 240, M/T 241, M/T 250
TS 32	22002400	For M/T 2401, M/T 242-243
TS 32	22002700	For M/T 244-245
TS 32	22002800	For M/T 251
TS 32	22002900	For M/T 252-254
TS 32	22002950	For M/T 255
TS 32	22002960	For M/T 260

Scope of delivery: 1 DIN rail



DIN rails DIN EN 60715 TH 35

Model	Order no.	Note
TS 35	22001702	For M/T 210, M/T 225, P 305, P 326
TS 35	22001910	For M/T 215-217, M/T 226-230
TS 35	22002020	For M/T 219-220, M/T 231-235, M/T 238, M/T 246, P 316, P 325, M/T 2381
TS 35	22002115	For M/T 221-223, M/T 237
TS 35	22002310	For M/T 240, M/T 241, M/T 250
TS 35	22002401	For M/T 2401, M/T 242-243
TS 35	22002710	For M/T 244-245
TS 35	22002810	For M/T 251
TS 35	22002910	For M/T 252, 253, 254
TS 35	22002951	For M/T 255

Scope of delivery: 1 DIN rail

## Euromas accessories

### Threaded inserts for mounting bosses

Model	Order no.	Note
DODGE M3x6,5	59002810	ND = 4.0 x 6.5
DODGE M4x9,5	59002820	ND = 5.4 x 9.5

Scope of delivery: 1 piece

Note: Put the threaded insert into the boss until it touches the base. Then hammer down the stretcher plate using a pin.



### Set of hinges

Model	Order no.
SchM	22006000

Scope of delivery: 1 set of hinges (polycarbonate)

Note: For use with a lid height of 15 mm and higher. Mechanical processing and mounting on request.

