

- + Industrial suspension system for control enclosures
- + Modular construction with free accessible cable channel
- + Wall, top-mounting or floor fixing

Included in delivery

Individual system components incl. cable channel covering and assembly materials

Technical data

Material	Connecting tube: DIN EN 573 EN AW-ALMgSi Components: DIN EN 1706 EN AC-AISI 12 (Fe) Cover profile: TPE
Painting	Powder coating
Colour	Tube and components in RAL 7035, lightgrey Cover profile: RAL 9005, jet black
Ingress protection	IP 54 to EN 60529

Product range

Type	Order No.	Weight (g)
Top-mounted joint	49.45 66 00	1430
Foot stand	49.45 72 00	538
Wall hinge W	49.45 70 00	2250
Angle	49.45 71 00	533
Coupling	49.45 73 00	521
Coupling GTKe-PRO	49.45 73 02	1010
Flange coupling	49.45 77 00	957
Angle coupling	49.45 75 00	882
Angle coupling GTKe-PRO	49.45 75 02	1270
Flange angle coupling	49.45 78 00	1017
Spare cover profile 2.5 m	49.45 69 00	206
Adapter plate GTKe-PRO	49.45 00 01	175

Aluminium profile, max. outreach 1.5 m

Connecting tube	Order No.	Weight (g)
Standard length: 0,5 m	49.45 10 01	1625
Standard length: 1 m	49.45 10 02	3250
Standard length: 2 m*	49.45 10 03	6500
Variable length (please specify)		

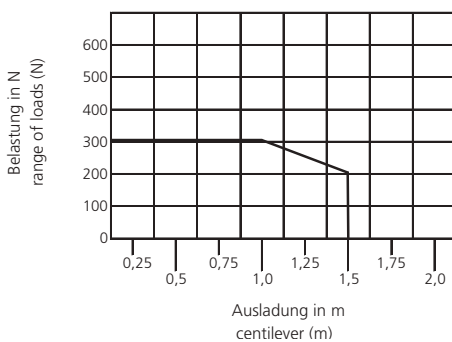
without threaded hole

Adaptation capability, using elements from GT 48/2 range*

	Order No.	Weight (g)
Console flange 30°	49.49 76 00	400
Adapter flange	49.49 79 00	1500
Inclination adapter	49.49 80 00	800

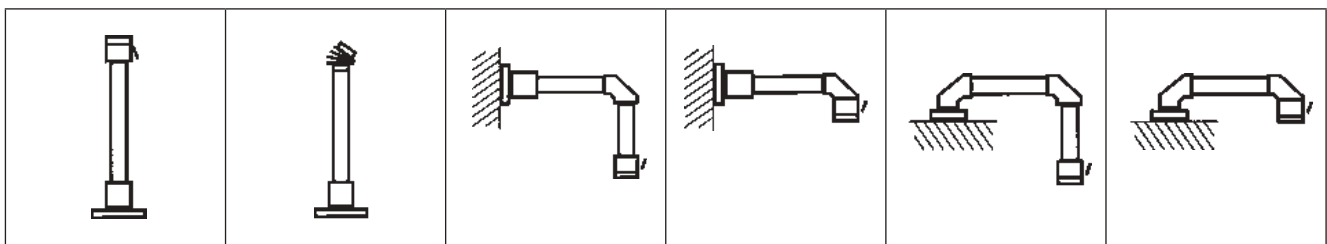
* Special colour RAL 7035 please specify when ordering.

Load diagram



Note: the vertical length of the profile is responsible for the load of the complete suspension system (lever arm!). Further information for this on request. The values in the above load diagram are guilty to an execution hanging or standing. The declarations of weight are a summary from installation weight, Commander and all components and tubes between Commander and angle.

System structure

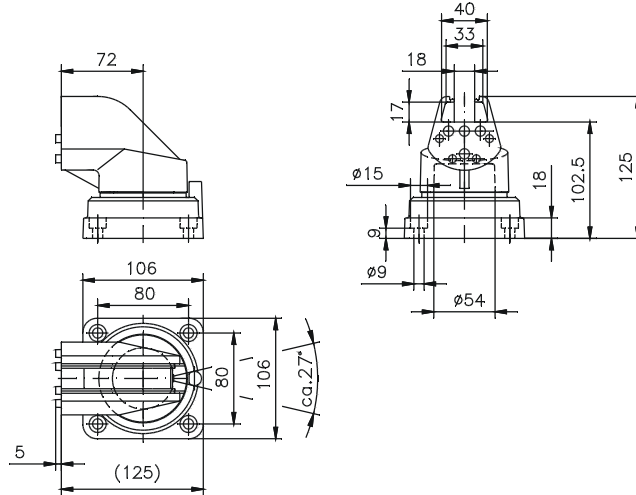


Components

Top-mounted joint



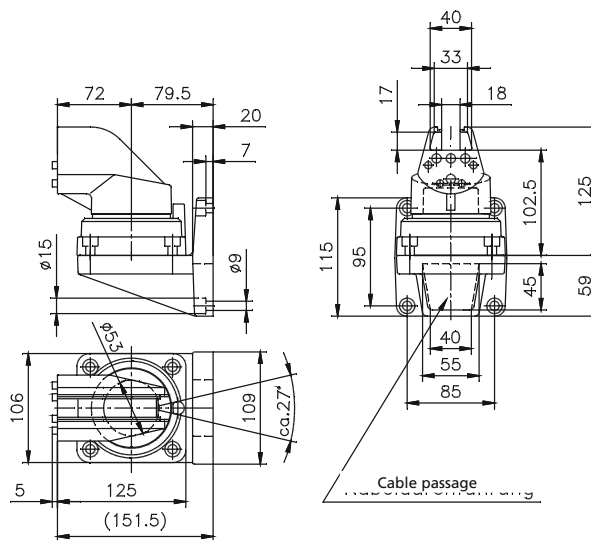
Order No.	Execution
49.45 66 00	Cast aluminium with steel inner tube and flange mounting. Swivelling range 330° (cannot be limited or stopped)



Wall hinge



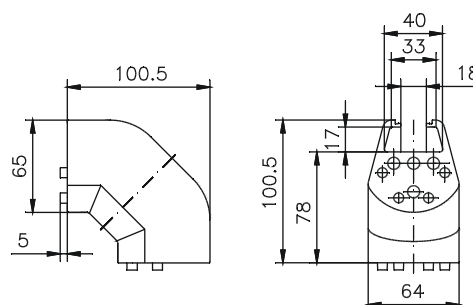
Order No.	Execution
49.45 70 00	Cast aluminium with steel inner tube and plain bearing. Swivelling range 330° (cannot be limited or stopped)



Angle



Order No.	Execution
49.45 71 00	Cast aluminium, angle 90°

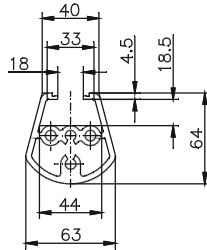


Components

Connecting tube



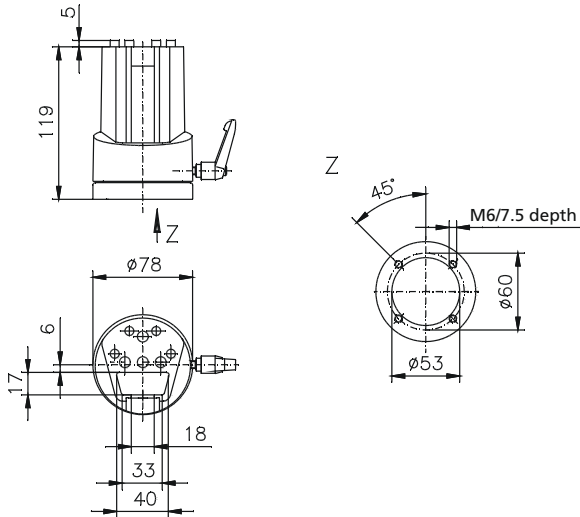
Order No.	Execution
49.45 10 01	0,5 m Aluminium extruded profile incl. plastic cover profile
49.45 10 02	1 m Aluminium extruded profile incl. plastic cover profile
49.45 10 03	2 m Aluminium extruded profile incl. plastic cover profile



Coupling



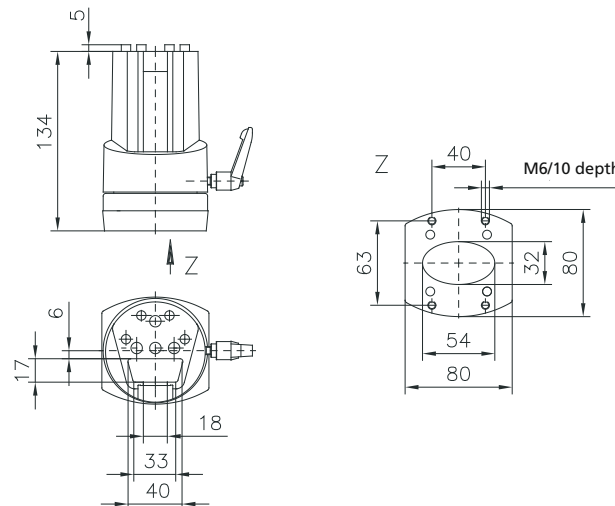
Order No.	Execution
49.45 73 00	Cast aluminium with internal steel tube. Swivelling range 290°



Coupling für Siemens Pro



Order No.	Execution
49.45 73 02	for direct connection to Siemens Pro devices. Swivelling range 290°

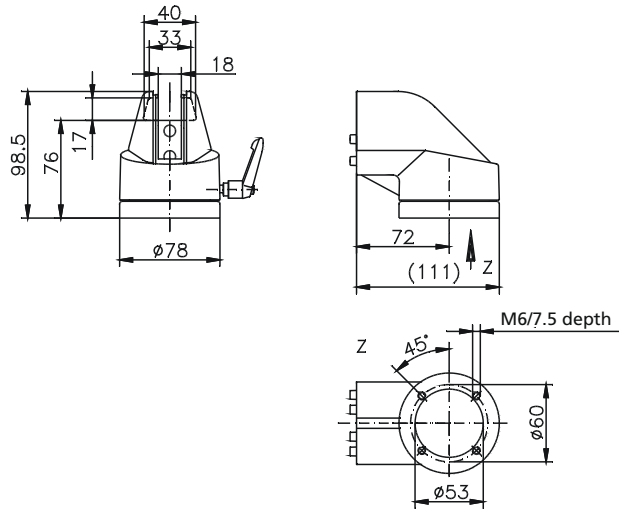


Components

Angle coupling



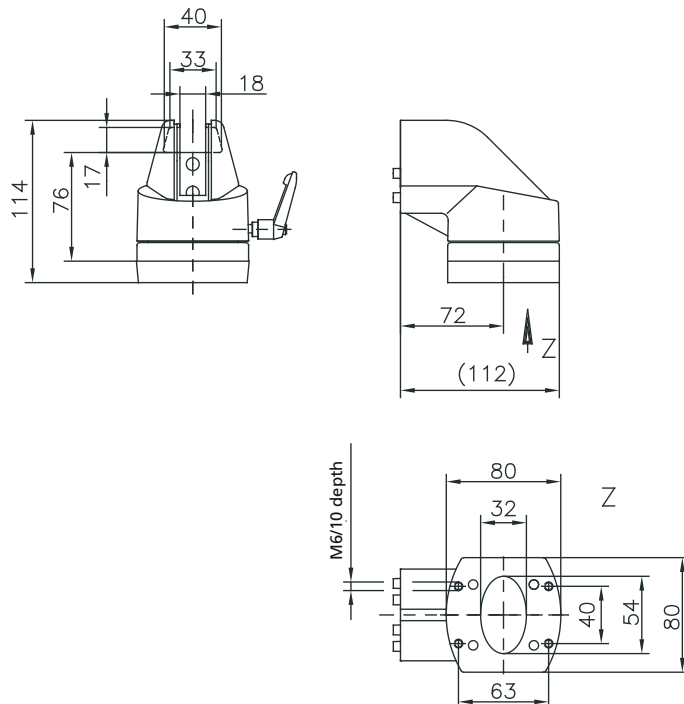
Order No.	Execution
49.45 75 00	Combination of angle and coupling for horizontal tube exit. Cast aluminium with steel inner tube. Swivelling range 290°



Angle coupling for Siemens Pro



Order No.	Execution
49.45 75 02	for direct connection to Siemens Pro commander units Combination of angle and coupling for horizontal tube exit. Cast aluminium with steel inner tube. Swivelling range 290°

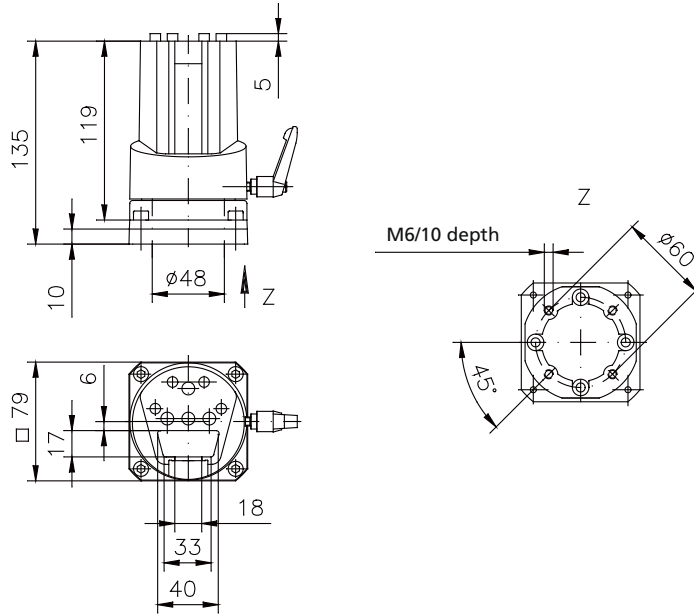


Components

Flange coupling



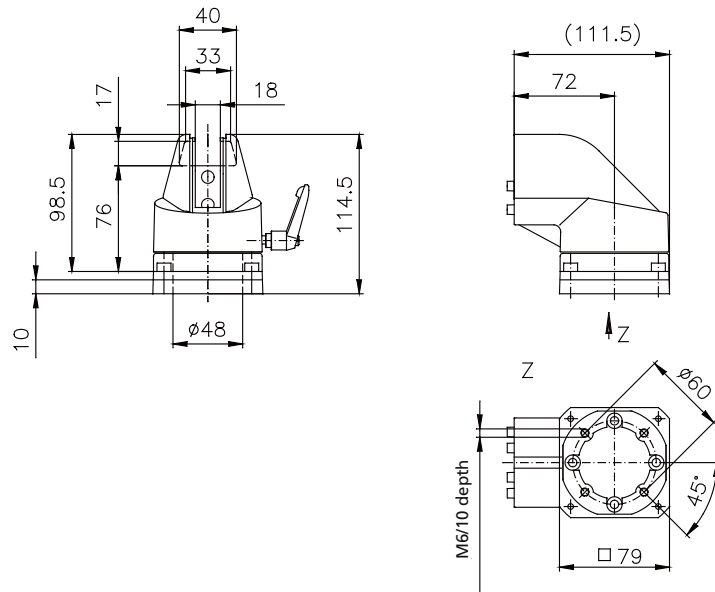
Order No.	Execution
49.45 77 00	Cast aluminium with internal steel tube. Swivelling range 290°



Flange angle coupling



Order No.	Execution
49.45 78 00	Combination of angle and coupling for horizontal tube exit. Cast aluminium with internal steel tube. Swivelling range 290°



Components

Foot stand

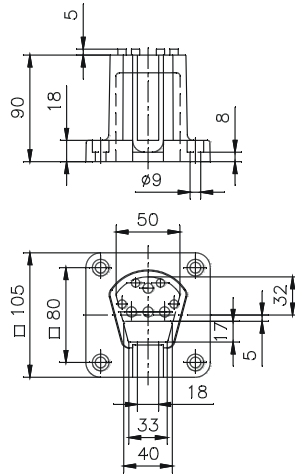


Order No.

Execution

49.45 72 00

Cast aluminium, fixed version



Adapter plate GTKe-Pro



Order No.

Execution

49.45 00 01

Adapter plate for connecting GTK electronic elements with Siemens Pro-command units (not necessary for coupling GTKe Pro and angle coupling GTKe Pro)

